

# BATTERY- TECHNOLOGY

Butterfly valves for full-containment processes



# POWER FOR BATTERY TECHNOLOGY.

## OUR SOLUTIONS FOR YOUR REQUIREMENTS

EBRO ARMATUREN sets global standards across a wide range of industrial applications. Leveraging the expertise of our Application Managers from various specialized fields, we provide industry-leading solutions to national and international customers — meeting even the toughest challenges of modern battery production and recycling.

Through smart design, the use of special materials, and meticulous, high-precision manufacturing, our valve, actuator and automation technology ensures a maximum level of quality. It creates optimal conditions for safety, efficiency, and material purity in production lines and recycling processes.

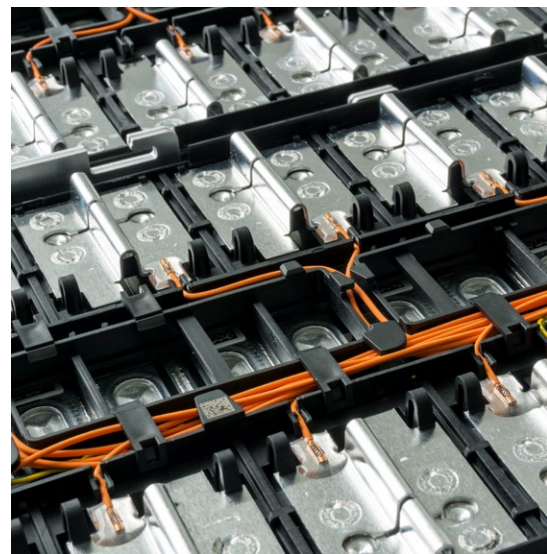
## SERVING YOU AROUND THE GLOBE

EBRO's quality knows no boundaries. That is why we are there for you through our extensive network of over 30 national and international subsidiaries. As a result, you can rely on top-class expertise, customized product solutions and a highly proficient service wherever your production site may be located.

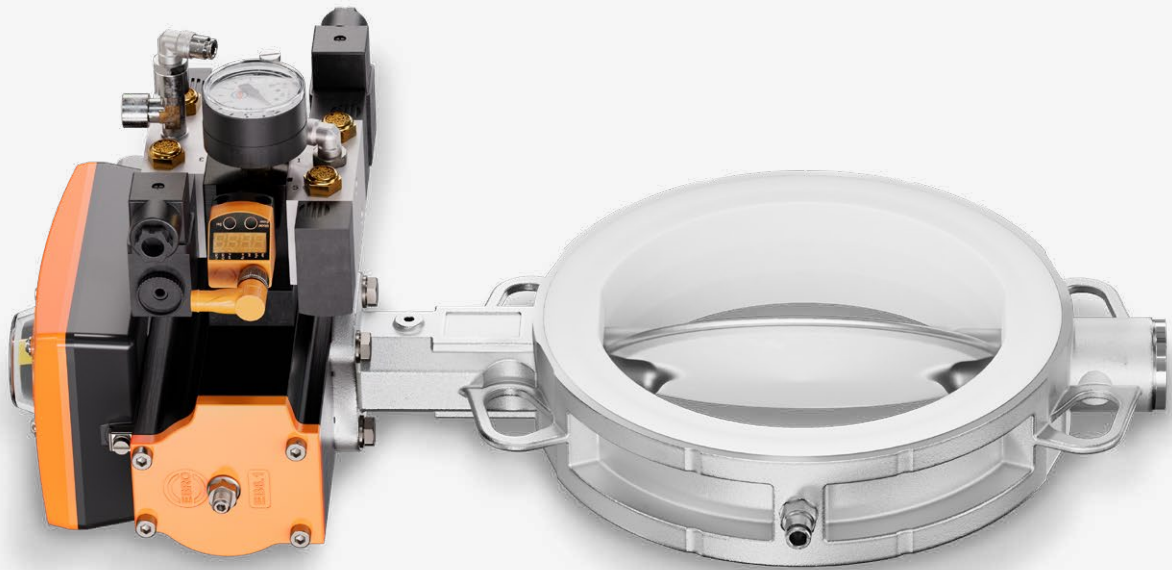
## THE SPECIALISTS. FOR MAXIMUM SAFETY IN PRODUCTION.

EBRO is a leading expert in the development and production of valves, actuators, and automation technology. We provide application-specific, innovative customer solutions from a single source, with perfectly coordinated components that are process- and torque-optimized, ensuring superior safety and efficiency.

Whether in battery production or battery recycling, our technologies set the standard for state-of-the-art quality, energy efficiency, and profitability.



“OUR DEDICATED TEAM  
PROVIDES GLOBAL SUPPORT  
AS A RELIABLE AND TRUSTED  
PARTNER.”



**INFLAS®**  
DN 80 – DN 600

## INFLAS®

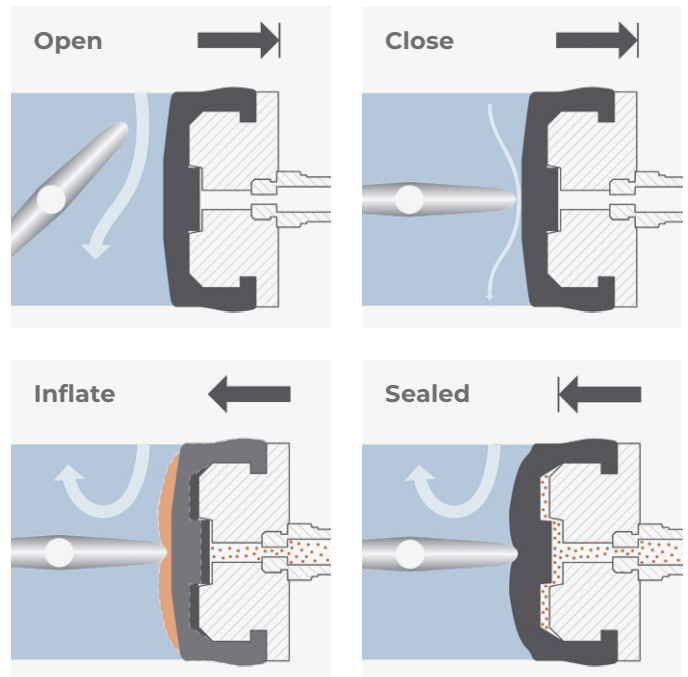
### Reduced wear through inflatable liner

The INFLAS® shut-off and control valve features an inflatable liner sealing system. This special design effectively prevents the formation of elastomer abrasion during valve closure, ensuring contamination-free processing of dry and pasty media.

### Simply unbeatable

The liner of the INFLAS® is pressurized after the valve disc is closed. This ensures the valve is sealed without the friction between the valve disc and elastomer, unlike with conventional designs.

This principle reliably prevents wear on the liner, ensuring contamination-free processing of the media.



### The benefits:

- Completely free of non-ferrous metals
- Full containment
- Virtually no elastomer contamination
- Emission-free (in accordance with TA-Luft)



Watch the INFLAS® animation on YouTube



More information on INFLAS®

## IBC VALVE BE

### Container valve for safe and secure transport

The BE valves are specifically designed for container systems. The slim, space-saving body is ideal for mobile containers. The valves can be mounted without any collision of screw heads due to their offset flange holes. The unique design of the outlet side guarantees secure and straight-forward sealing at the docking station.



More information on container valves

#### The benefits:

- Completely free of non-ferrous metals
- Drop latch
- Specifically for docking systems
- Remote controllable
- ATEX/IECEX



**BE Container Valve**  
DN 50 – DN 300

## VIDOS® – VIBRATING-DOSING VALVE

### Precise dosing even for the most challenging media

ViDos® control valves ensure optimal discharge performances in coarse and fine flows. Filling and emptying operations are performed cleanly and contamination-free in a direct downward direction.

Optionally, the ViDos can be enhanced with the wear-minizing function of INFLAS®. Additionally, various disc and liner materials are available for abrasive media.



More information on the ViDos®

#### The benefits:

- Completely free of non-ferrous metals
- Volume flow precisely adjustable
- Rapid positioning between 4 and 20 mA
- High repeatability
- Unbeatable service life
- Explosion protection



**ViDos® Vibration Valve**  
DN 80 – DN 600

## CYCLE LOCK TS

### Optimum explosion isolation even in the case of large pressure differences

Ideal for safe discharge from silos, storage tanks, BigBag emptying stations, sack loading stations, as well as reliable infeed to conveying lines, mixers and reactors. EBRO cycle locks are approved as passive explosion isolators at performance level D.

Optional features include level indicators, access hatches, discharge aids, etc. Also available in a conical design.



Watch the Cycle Lock animation on YouTube



More information on the Cycle Lock

#### The benefits:

- Completely free of non-ferrous metals
- Full containment: no need to open the lock for cleaning
- Schleuse zur Abreinigung
- Explosion-proof
- Resistant to flame penetration
- ATEX/IECEX including for hybrid mixtures



**TS Cycle-Lock**  
DN 50 – DN 600  
Chamber volume - customer specific

## H011

### For maximum purity and safety

The H011 hygiene valve from EBRO ensures the highest purity and safety in battery manufacturing. Its dead-space-free design and CIP capability enable efficient cleaning and contamination-free production – making it ideal for the reliable handling of sensitive liquids such as electrolytes.



More information on the H011.

#### The benefits:

- Completely free of non-ferrous metals
- Cavity-free
- Optimal flow geometry
- CIP-capability
- ATEX / IECEx



**H011**  
DN 50 – DN 250

## IMPELLER VALVE FS-M

### For a consistent discharge of solids

EBRO impeller valves are designed to ensure a consistent discharge, even of challenging media. High rotational speed and small chamber volumes enhance/improve the flow rate and slow down any rapid-flowing media.



More information on the Impeller valve.

#### The benefits:

- Completely free of non-ferrous metals
- Variable speed
- Shut-off function
- Gear motors available in ATEX, CSA, UL, etc.
- Optional in full stainless steel



**FS-M**  
DN 150 – DN 500

## Z400

### Tailored perfectly to PE/PP and lined metal pipes

The concentric, resilient seated butterfly and control valves of the Z400 series feature a reduced inner diameter for easy installation to PE/PP plastic pipes and lined metal pipes. This design eliminates the need to chamfer the pipes.



More information on the Z400

#### The benefits:

- Completely free of non-ferrous metals
- Optimal flow geometry
- Suitable for solids, liquids and gas
- ATEX / IECEx
- Minimal wear



**Z400**  
Inner diameter for PE/PP  
DN 40 – DN 600



## HEADQUARTERS

### **EBRO ARMATUREN** **Gebr. Bröer GmbH**

Karlstraße 8  
D-58135 Hagen  
Germany

☎ +49 2331 904-0

✉ [post@ebro-armaturen.com](mailto:post@ebro-armaturen.com)

🌐 [www.ebro-armaturen.com](http://www.ebro-armaturen.com)

A Bröer Group company  
[www.broeer-group.com](http://www.broeer-group.com)

Follow us:  